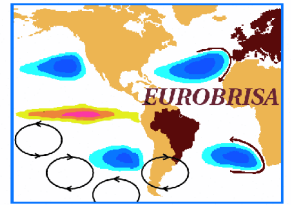


# EUROBRISA: A EURO-Brazilian Initiative for improving South American seasonal forecasts

by Caio A. S. Coelho<sup>1</sup> (e-mail: caio@cptec.inpe.br)

in collaboration with

Tércio Ambrizzi<sup>2</sup>, David L. T. Anderson<sup>5</sup>, Magdalena A. Balmaseda<sup>5</sup>, Iracema F. A. Cavalcanti<sup>1</sup>, Michel Déqué<sup>8</sup>, Maria A. F. S. Dias<sup>1</sup>, Pedro L. S. Dias<sup>2</sup>, Francisco J. Doblas-Reyes<sup>5</sup>, Richard Graham<sup>6</sup>, Alexandre K. Gueter<sup>3</sup>, Antonio D. Moura<sup>4</sup>, Luciano P. Pezzi<sup>1</sup>, Reinaldo B. Silveira<sup>4</sup>, David B. Stephenson<sup>7</sup> and Timothy N. Stockdale<sup>5</sup>.



1. Centro de Previsão de Tempo e Estudos Climáticos (CPTEC/INPE), Brazil,
2. Universidade de São Paulo (USP), Brazil
3. Universidade Federal do Paraná (UFPR), Brazil,
4. Instituto Nacional de Meteorologia (INMET), Brazil,
5. European Centre for Medium-Range and Weather Forecasts (ECMWF),
6. United Kingdom Met Office (UKMO), UK,
7. University of Exeter (EU), UK.,
8. Centre National de Recherches Météorologiques (CNRM/Météo-France), France

<http://www.cptec.inpe.br/~caio/EUROBRISA>

## 1. Key idea

To improve seasonal forecasts in South America, a region where there is seasonal forecast skill and useful value

### Aims

- Strengthen collaboration and promote exchange of expertise and information between European and South American seasonal forecasters
- Produce improved well-calibrated real-time probabilistic seasonal forecasts for South America
- Develop real-time forecast products for non-profitable governmental use (e.g. hydropower production, agriculture and health)

### Forecasting approach

Produce combined and calibrated (i.e. integrated) forecasts using a hybrid system composed by an empirical (statistical) and dynamical (physical) coupled models.

The current version of the system uses 1987-2001 hindcasts from ECMWF System 3, UK Met Office and the empirical model (see 2). CPTEC hindcasts for the same period are planned to be included next.

## 2. The empirical model

$$Y|Z \sim N(M(Z - Z_o), T)$$

Y: JJA precipitation

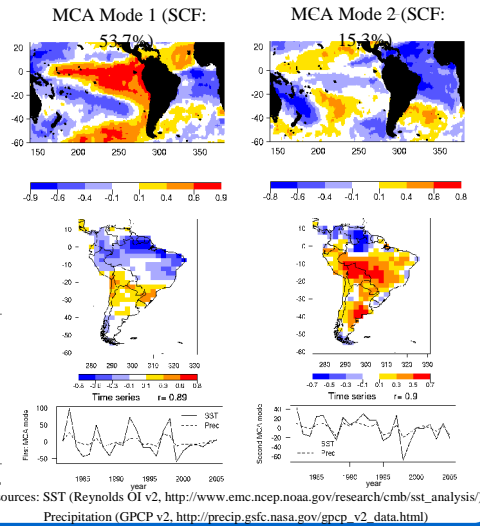
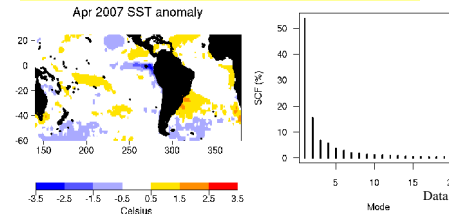
Z: April sea surface temperature (SST)

$$M = S_{YZ}S_{ZZ}^{-1} \quad Y: n \times q$$

$$-M Z_o = \bar{Y} - \bar{Z}M \quad Z: n \times v$$

$$T = S_{YY} - S_{YZ}S_{ZZ}^{-1}S_{YZ}^T \quad T: q \times q$$

Model uses first six leading Maximum covariance analysis (MCA) modes of the matrix  $Y^T Z$ .



Data sources: SST (Reynolds OI v2, [http://www.emc.ncep.noaa.gov/research/cmb/sst\\_analysis/](http://www.emc.ncep.noaa.gov/research/cmb/sst_analysis/))  
Precipitation (GPCP v2, [http://precip.gsfc.nasa.gov/gpcp\\_v2\\_data.html](http://precip.gsfc.nasa.gov/gpcp_v2_data.html))

## 3. Forecast Assimilation: Calibration and combination procedure for producing integrated forecasts

$$Y: \text{JJA precipitation} \quad p(Y|X) = \frac{p(X|Y)p(Y)}{p(X)}$$

$$X: \text{1-month lead precip. forecasts for JJA} \quad p(X)$$

Prior:  $Y \sim N(Y_b, C)$

Likelihood:  $X|Y \sim N(G[Y - Y_o], S)$

$$G = S_{XY}S_{YY}^{-1}$$

$$-G Y_o = \bar{X} - G \bar{Y}$$

$$S = S_{XX} - G S_{YY} G^T$$

Posterior:  $Y|X \sim N(Y_a, D)$

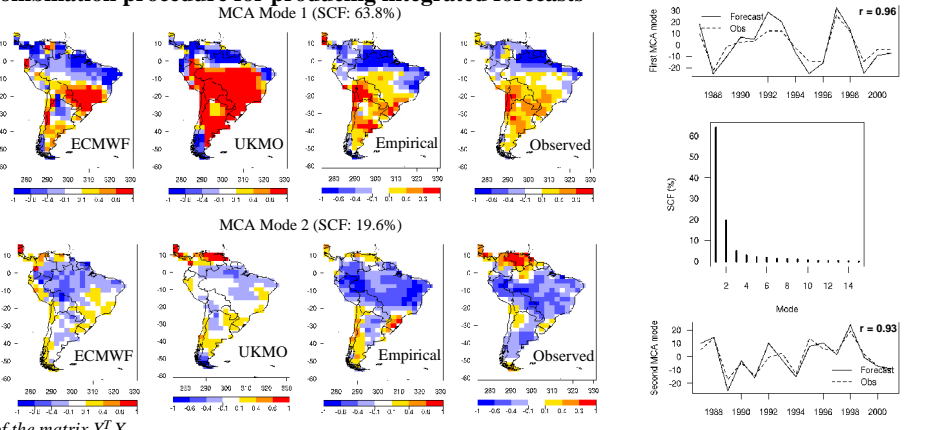
$$Y_a = Y_b + L[X - G(Y_b - Y_o)]$$

$$D = (G^T S^{-1} G + C^{-1})^{-1} = (I - L G) C$$

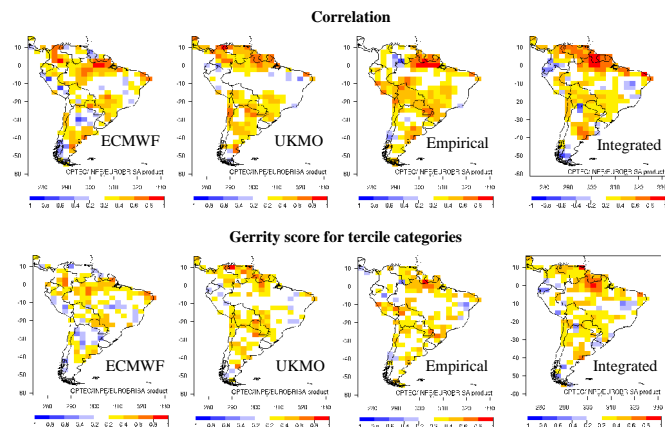
$$L = C G^T (C G^T + S)^{-1}$$

$$L = C G^T (C G^T + S)^{-1}$$

Forecast assimilation uses first three leading MCA modes of the matrix  $Y^T X$ .

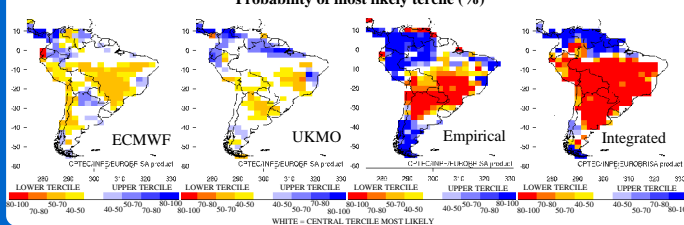


## 4. Skill assessment: 1-month lead precipitation forecasts for JJA



Integrated forecasts have improved skill when compared to coupled and empirical forecasts

## 5. Example: JJA 2007 precipitation forecast (issued in May)



### References

- Stephenson D. B., C.A.S. Coelho, F. J. Doblas-Reyes and M. Balmaseda, 2005: Forecast Assimilation: A unified framework for the combination of multi-model weather and climate predictions. *Tellus A*, 57, 253-264.
- Coelho C.A.S., D. B. Stephenson, M. Balmaseda, F. J. Doblas-Reyes and G. J. van Oldenborgh, 2006: Towards an integrated seasonal forecasting system for South America. *J. Climate*, 19, No. 15, 3704-3721.

**Acknowledgments:** CASC thanks WCRP and RMetSoc for travel support and FAPESP processes (05/05210-7 and 06/02497-6) for research funding. We also thank ECMWF, UK Met Office and Météo-France for providing their coupled model forecasts.